



GLASS MOSAICS Installation Specification



SCOPE

This specification covers the installation of Aquabella sheet mounted glass mosaic tiles in interior and exterior dry and wet areas.

NOTES TO SPECIFIER

- LATICRETE® International, Inc. champions the use of Quality Labor for all tile and stone installations, specifically those represented by the NTCA Five Star Contractor Program (www.tile-assn.com/Member/FiveStar), the TCAA Trowel of Excellence Program (www.tcaainc.org/trowel-of-excellence.php), and the LATICRETE® Most Valued Partner (MVP) Program (www.laticrete.com/contractors/mvp_site.aspx).
- A LATICRETE® "System" approach to installation is covered by a comprehensive 25 year warranty (Reference LATICRETE DS 025.0APD) for all interior wall installations.
- Please contact your local LATICRETE® representative for assistance @ (800) 243-4788 ext. 0

INSTALLATION MATERIALS

Tiles: Aquabella sheet mounted glass mosaic tiles as supplied by Aquabella <https://www.aquabellatile.com/>

Swimming Pool Tank Membrane: LATICRETE HYDRO BAN or LATICRETE HYDRO BAN Cementitious Waterproofing Membrane

Latex-Portland Cement Thick Bed Mortar: LATICRETE® 3701 Fortified Mortar Bed

Waterproofing and Crack Isolation Membrane: LATICRETE® HYDRO BAN®

Latex-Portland Cement Thinset Mortar: LATICRETE® MULTIMAX™ LITE or LATICRETE® 254 Platinum, or
LATICRETE® Glass Tile Adhesive

Epoxy Thin Bed Adhesive Mortar: LATAPOXY® 300 Adhesive (Option for when tiles will be installed onto clean, rigid, steel substrates)

Latex-Portland Cement Grout: LATICRETE® PERMACOLOR® or LATICRETE® PERMACOLOR® Select Grout

Stain-Resistant Epoxy Grout: SPECTRALOCK® 1 Pre-Mixed Grout LATICRETE SPECTRALOCK® PRO Premium Grout

100% Silicone Caulk: LATICRETE® LATASIL™ and LATICRETE® LATASIL 9118 Primer

Tile and stone installation materials to be supplied solely by LATICRETE® International, Inc.; Bethany, CT; USA Telephone: 1 (203) 393-0010; Fax: 1 (203) 393-1684; E-mail: technicalservices@laticrete.com; Website: www.laticrete.com.

PREPARATIONS

Prior to commencing installation, the Contractor is to examine substrates and advise the General Contractor and Architect of all existing conditions and surface contamination which will require correction, before the work commences. Before starting, substrates are to be cleaned to remove concrete curing compounds, sealers, soil, mortar, dirt, dust, paint, etc. Curing compounds and sealers must be removed by bead-blasting, grit / sand blasting, hydro blasting, diamond wheel grinder with dustless vacuum attachment, or equivalent methods of mechanical scarifying. For tiles with edges shorter than 15" (375mm), maximum allowable substrate variation is ¼" in 10' (6mm in 3m) from the required plane, with no more than 1/16" variation in 12" (1.5mm variation in 300mm), when measured from the high points in the surface. Use LATICRETE® 3701 Fortified Mortar For trueing and flattening of concrete and masonry wall & floor substrates (over a slurry bond coat of LATICRETE 254 Platinum for bonded horizontal screed applications). Dry and dusty concrete and masonry surfaces are to be water washed, with excess water removed, just prior to the application of LATICRETE Systems Materials.

EXPANSION AND CONTROL JOINTS

Provide control or expansion joints as located in contract drawings and in full conformity, especially in width and depth, with architectural details.

- Substrate joints must carry through, full width, to surface of tile.
- Install expansion joints in tile over construction/cold joints or control joints in substrates.
- Install expansion joints where tile, abut restraining surfaces (such as perimeter walls, curbs, columns), changes in plane and corners.
- Joint width and spacing depends on application - follow TCNA "[Handbook for Ceramic, Glass, and Stone Tile Installation](#)" Detail "EJ-171 Expansion Joints" or consult sealant manufacturer for recommendation based on project parameters.
- Joint width: $\geq \frac{1}{8}$ " (3mm) and ≤ 1 " (25mm).
- Joint width: depth ~2:1 but joint depth must be $\geq \frac{1}{8}$ " (3mm) and $\leq \frac{1}{2}$ " (12mm).

Layout (field defined by joints): 1:1 length: width is optimum but must be $\leq 2:1$. Remove all contaminants and foreign material from joint spaces/surfaces, such as dirt, dust, oil, water, frost, setting/grouting materials, sealers and old sealant/backer. Use LATICRETE® LATASIL™ 9118 Primer for underwater and permanent wet area applications, or for porous stone (e.g. limestone, sandstone etc...) installations. Install appropriate backing material (e.g. closed cell backer rod) based on expansion joint design and as specified in section 07 92 00. Apply masking tape to face of tile, veneer. Use caulking gun, or other applicator, to completely fill joints with sealant. Within 5-10 minutes of filling joint, 'tool' sealant surface to a smooth finish. Remove masking tape immediately after tooling joint. Wipe excess sealant off all surfaces immediately.

MIXING

Mix according to printed product instructions included with each LATICRETE® product package.

WATERPROOFING AND CRACK ISOLATION MEMBRANE INSTALLATION

Install LATICRETE® HYDRO BAN® in compliance with current revisions of ANSI A108.1 (2.7 Waterproofing), ANSI A108.13, and ANSI A108.17. Review the installation and plan the application sequence. Pre-cut LATICRETE Waterproofing/Anti-Fracture Fabric (if required), allowing 2" (50mm) for overlap at ends and sides to fit the areas as required. Roll up the pieces for easy handling and placement. Shake or stir HYDRO BAN® before using.

Pre-Treat Cracks and Joints - Fill all substrate cracks, cold joints and control joints to a smooth finish using a LATICRETE latex-fortified thin-set. Alternatively, a liberal coat* of LATICRETE HYDRO BAN applied with a paint brush or trowel may be used to fill in non-structural joints and cracks. Apply a liberal coat* of LATICRETE HYDRO BAN approximately 8" (200mm) wide over substrate cracks, cold joints, and control joints using a paint brush or heavy napped paint roller.

Pre-Treat Coves and Floor/Wall Intersections - Fill all substrate coves and floor/wall transitions to a smooth finish and changes in plane using a LATICRETE latex-fortified thin-set. Alternatively, a liberal coat* of LATICRETE HYDRO BAN applied with a paint brush or trowel may be used

to fill in cove joints and floor/wall transitions <math><1/8''</math> (3mm) in width. Apply a liberal coat* of LATICRETE HYDRO BAN approximately 8" (200mm) wide over substrate cracks, cold joints, and control joints using a paint brush or heavy napped paint roller.

Pre-Treat Drains - Drains must be of the clamping ring type, with weepers as per ASME A112.6.3. Apply a liberal coat* of LATICRETE HYDRO BAN around and over the bottom half of drain clamping ring. Cover with a second liberal coat of HYDRO BAN. When the LATICRETE HYDRO BAN dries, apply a bead of LATICRETE LATASIL™ where the LATICRETE HYDRO BAN meets the drain throat. Install the top half of drain clamping ring.

Pre-Treat Penetrations - Allow for a minimum 1/8" (3mm) space between drains, pipes, lights, or other penetrations and surrounding ceramic tile, stone or brick. Pack any gaps around pipes, lights or other penetrations with a LATICRETE latex-fortified thin-set. Apply a liberal coat* of LATICRETE HYDRO BAN around penetration opening. Cover the first coat with a second liberal coat* of LATICRETE® HYDRO BAN®. Bring LATICRETE HYDRO BAN up to level of tile or stone. When LATICRETE HYDRO BAN has dried to the touch seal with LATICRETE LATASIL™.

Main Application - Allow any pre-treated areas to dry to the touch. Apply a liberal coat* of LATICRETE HYDRO BAN with a paint brush or heavy napped roller over substrate including pre-treated areas and allow to dry to the touch. Install another liberal coat* of LATICRETE HYDRO BAN over the first coat. Let the top coat of LATICRETE HYDRO BAN dry to the touch approximately 1 – 2 hours at 70°F (21°C) and 50% RH. When the top coat has dried to the touch inspect the surface for pinholes, voids, thin spots or other defects. LATICRETE HYDRO BAN will dry to an olive green color when fully cured. Use additional LATICRETE HYDRO BAN to seal any defects.

Movement Joints - Apply a liberal coat* of HYDRO BAN, approximately 8" (200mm) wide over the areas. Then embed and loop the 6" (150mm) wide LATICRETE Waterproofing/Anti-Fracture Fabric and allow the LATICRETE HYDRO BAN liquid to bleed through. Immediately apply a second coat of HYDRO BAN.

*** Dry coat thickness is 20 – 30 mil (0.02 - 0.03" or 0.5 - 0.8mm); consumption per coat is approximately 0.01 gal/ft² (approx. 0.4 L/m²); coverage is approximately 100 ft² /gal (approx. 2.5 m²/ L). LATICRETE Waterproofing/Anti-Fracture Fabric can be used to pre-treat cracks, joints, curves, corners, drains, and penetrations with HYDRO BAN.**

Protection - Provide protection for newly installed membrane, even if covered with a thin-bed ceramic tile, installation against exposure to rain or other water for a minimum of 2 hours at 70°F (21°C) and 50% RH. For temperatures between 45°F and 69°F (7°C to 21°C) allow a minimum 24 hour cure period.

Flood Testing - Allow membrane to cure fully before flood testing, typically a minimum 2 hours at 70°F (21°C) and 50% RH. Cold conditions will require a longer curing time. For temperatures between 50°F and 69°F (10°C to 21°C) allow a minimum 24 hour cure period prior to flood testing.

Cementitious Waterproofing Membrane

LATICRETE® HYDRO BAN Cementitious Waterproofing Membrane is a one component, polymer fortified, cement based waterproofing material that mixes with water. This product can be used on walls and floors in wet areas; swimming pools, water features and fountains. HYDRO BAN Cementitious Waterproofing Membrane handles negative & positive hydrostatic pressure up to 2 BARS (29 PSI) when applied at 40 Mills (1mm) thick. Flood test within 2 hours. Passes ANSI A118.10 Waterproofing and ANSI A118.12 Crack Isolation (with mesh/fabric up to 1/8" (3mm)).

HYDRO BAN Cementitious Waterproofing Membrane can be applied using a paint brush, roller or trowel. All areas must have 40 mills (1.02 mm) to ensure waterproofing capabilities. For best results, use a 1/4"-1/2" nap roller to apply. A brush or v-notch trowel can also be used as well.

Apply generously to achieve 40 mills. Allow any pre-treated areas to dry to the touch. Apply a liberal coat^{^^} of HYDRO BAN Cementitious Waterproofing Membrane with brush or roller over substrate including pre-treated areas. Immediately or once dry to the touch. Apply another

liberal coat^{^^} of HYDRO BAN Cementitious Waterproofing Membrane over the first coat. Let topcoat dry to the touch, approximately 1–2 hours at 70°F (21°C) and 50% RH. When last coat has dried to the touch, inspect final surface for pinholes, voids, thin spots or other defects. Use additional HYDRO BAN Cementitious Waterproofing Membrane to seal defects.

TILE INSTALLATION

Thin Bed Method: Install LATICRETE® 254 Platinum in compliance with current revisions of ANSI A108.02, A108.1B and ANSI A108.5. Use the appropriate trowel notch size to ensure proper bedding of the tile selected.

Installation of Glass Mosaic Tile:

Firmly apply the latex Portland cement thin-set mortar (LATICRETE® 254 Platinum, or LATICRETE® MULTIMAX™ LITE, or LATICRETE® Glass Tile Adhesive) to the substrate using the flat side of a trowel to initiate a bond coat. Using the appropriate sized small square notch trowel, add more thin-set mortar and notch the mortar in a horizontal, straight pattern. Using the flat side of the trowel, press mortar into good contact with substrate, then apply additional adhesive mortar with the notched side of the trowel. Place the tile onto the fresh mortar and press firmly. Use a flat wood block, rubber grout float or a rubber mallet to beat the face of the tiles and firmly embed the tiles into the mortar. Full coverage of thin-set mortar to tile backs should be achieved after the beat in. Allow the tile installation to cure for 24 hours minimum at 70°F (21°C) prior to grouting. Use warm water and a white scrub pad (or stiff nylon brush) to remove any residual setting material from the tile's face prior to grouting. Allow the installation to air dry before grouting.

Installation of Paper Face Mounted Glass Mosaics (per ANSI A108.15):

Firmly apply the latex Portland cement thin-set mortar (LATICRETE® 254 Platinum White or LATICRETE® MULTIMAX™ LITE or LATICRETE Glass Tile Adhesive) to the substrate using the flat side of a trowel to initiate a bond coat. Using the appropriate sized square notch trowel, add more thin-set mortar and notch the mortar in a horizontal, straight pattern. Using the flat side of the trowel, flatten the notches to attain a smooth, consistent setting bed. Place the glass mosaic sheets onto the fresh mortar and press firmly. Use a flat wood block or rubber grout float to beat the face of the tiles and firmly embed the tiles into the mortar. Full coverage of thin-set mortar to tile backs should be achieved after the beat in. Periodically check coverage by lifting a sheet of tile to examine coverage (note that a minimum of 95% adhesive mortar coverage is required). Apply the remaining sheets and make sure that the vertical and horizontal grout joints line up and a consistent pattern is maintained. Transparent and translucent glass tiles can show shadowing (ghosting) if the glass tile manufacturer's installation instructions are not followed. Allow the tile installation to cure for 24 hours minimum (vertical installation) and 48 hours minimum (horizontal installation) at 70°F (21°C) prior to grouting. Use warm water and a white scrub pad (or stiff nylon brush) to remove any residual setting material from the tile's face prior to grouting. Allow the installation to air dry before grouting.

Note: DO NOT APPLY EXCESSIVE MORTAR ON THE SURFACE TO BE COVERED WITH MOSAICS. Too much mortar will squeeze up through the joints and produce an uneven finished surface. Excessive thickness of mortar can also slow the hardening of the mortar which means that the mortar will remain soft for an extended period of time. Transparent and translucent glass tiles can show shadowing ("ghosting") if the glass tile manufacturer's installation instructions are not followed. Apply the remaining sheets and make sure that the vertical and horizontal grout joints line up and a consistent pattern is maintained. The glass mosaic paper face mounting should be removed as soon as the tiles have set firm. Follow tile manufacturer's recommend cure time prior to removing the paper face mounting. Use a sponge dampened with clean water to moisten the paper sheets covering the mosaics. Two or more applications of water may be needed to safely remove the paper facing from the tile. When the paper is properly saturated, peel the paper from the face of the tile being careful not to pull tile away from the mortar. Inspect the grout joints for pinholes and voids and fix as necessary. Within one hour of initial set, clean any residual glue and paper from the surface using a light, damp sponge and buff with a dry cloth.

STAIN-RESISTANT EPOXY GROUT INSTALLATION

Note: *Minor surface scratching may result from using sanded grouts. Always conduct a test area, prior to proceeding with the actual installation, to verify suitability and acceptability of a sanded grout.*

SPECTRALOCK PRO Premium Grout:

Allow glass tile installation to cure a minimum of 24 hours @ 70° F (21°C). Substrate temperature must be 40-95°F (4-35°C). Verify joints are free of dirt, debris or grout spacers. Sponge or wipe dust/dirt off tile faces and remove water standing in joints. Apply grout release to face of tile if recommended by tile manufacturer. Cut open pouch and pour SPECTRALOCK PRO Premium Grout Part A Liquid into a clean mixing pail.

Then open pouch and pour SPECTRALOCK PRO Premium Grout Part B Liquid into the mixing pail. Mix by hand or with a slow speed mixer until the two liquids are well blended. Then, while mixing, add SPECTRALOCK PRO Premium Grout Part C Powder and blend until uniform. Install SPECTRALOCK PRO Premium Grout in compliance with current revisions of ANSI A108.02 and ANSI A108.6. Spread using a sharp edged, hard rubber float and work grout into joints, packing joints full and free of voids/pits. Then hold float face at a 90° angle to grouted surface and use float edge to "squeegee" off excess grout. Once excess grout is removed, a thin film/haze will be left. Initial cleaning of the remaining film/haze can begin approximately 20-30 minutes after grouting. Begin by mixing cleaning additive packet with 2 gallons (7.6 L) of clean water in a clean bucket to make cleaning solution. Dip a clean sponge into the bucket and then wring out cleaning solution until sponge is damp. Using a circular motion, lightly scrub grouted surfaces with the damp sponge to dissolve grout film/haze. Then drag sponge diagonally over the scrubbed surfaces to remove froth. Rinse sponge frequently and change cleaning solution at least every 50 ft² (4.7m²). Discard sponges as they become "gummy" with residue. Within one (1) hour of finishing first cleaning, clean the same area again following the same procedure but utilizing a clean white scrub pad and fresh cleaning solution. Rinse scrub pad frequently. Drag a clean sponge diagonally over the scrubbed surfaces to remove froth. Use each side of sponge only once before rinsing and change cleaning solution at least every 50 ft² (4.7m²). Allow cleaned areas to dry and inspect tile/stone surface. For persistent grout film/haze (within 24 hours), repeat scrubbing procedure with undiluted white vinegar and clean pad. Rinse with clean water and allow surface to dry. Inspect grout joint for pinholes/voids and repair them with freshly mixed SPECTRALOCK® PRO Premium Grout.

SPECTRALOCK® 1 Pre-Mixed Grout, Application See Data Sheet 36589.5, How To Install for detailed installation instructions. This document is available online at www.laticrete.com. Please note that working time is affected by many variables including surface and room temperatures. Warmer climates, for example, will shorten curing & working time, while colder conditions will extend the cure time. Installation substrate temperature range should be between 50°F (10°C) - 90°F (32°C). Do not add water or any other materials to the grout mixture. This will have an adverse effect on the product and void all warranties. Clean-up is critical. Prepare for the initial and final washes by having pails of clean water ready for the clean-up process. NOTE: After surfaces are cleaned, allow to dry thoroughly before grouting. • Spread grout using a sharp edged, firm rubber grout float. Work the grout diagonally across the joints, packing them full. • "Cut" excess grout off the tile surface using the edge of the float held at a 90° angle like a squeegee, stroking diagonally to avoid pulling grout out of filled joints. Cleaning NOTE: Have clean water, new clean sponges, white nylon scrub or scouring pads and clean microfiber towels ready. • Once grout has been spread, wait approximately 5-10 minutes before cleaning (or within an "arms-length" of what has been spread). Wait slightly longer at colder temperatures. • Submerge clean sponge into water and wring until the sponge is moist but not dripping with water. Putting too much water on the grout joints could affect the cure time and appearance of grout joints. • Change wash water every 50 ft² (4.6 m²). • Wipe grout joints and tile surface in a light circular motion, loosening grout residue while keeping the joints smooth and full. • Drag a clean sponge diagonally over the scrubbed surfaces to remove any remaining grout residue. F.7.3.12 - 0315 Data Sheets are subject to change without notice. For latest revision, visit laticrete.com. DS-36589-0520 • For best results, we recommend to rinse sponge after every final pass; use each side of sponge only once between rinsing. • Check work as you clean. If necessary, repair any low spots with additional grout. WALL APPLICATIONS Instead of a sponge, the use of a damp, well wrung, folded terry cloth towel can be helpful to remove excess grout while smoothing joints less than 1/8" (3 mm) on walls. Use light pressure when using folded terry cloth towel. FINAL INSPECTION AND CLEANING • Begin final cleaning when grout joints are hard to the touch, depending upon the size of the grout joint and the ambient temperature. Smaller grout joints (1/16" (1.6mm) or 1/8" (3.2mm)) would take less time to start to clean, approx. 45 min. For larger grout joints (3/8" (9.5 mm)) we recommend waiting about 1 hour to ensure the grout joints are hard and cannot be disturbed with the second cleaning. • Use only clean water and simply dunk the white nylon scrub or scouring pad in the water and let all the water pour out – it should be nearly dry and then start to break up the grout haze left from the initial wash on the surface of the tiles. • Rinse scrub pad frequently, letting all water escape before continuing to clean. • Then, use a clean cloth to the scrubbed surfaces to remove any residue. • Allow cleaned areas to dry and inspect tile/stone surface. • If haze remains on the tiles the following day, it can be buffed off the using a nylon scrub pad. • Make certain to check tile surface with adequate lighting after the tile surface is dry. • Rinse with clean water and allow surface to dry. Inspect grout surface and repair as required with fresh grout. • For ANY area that will later receive intermittent water exposure, allow area to cure a minimum of 24 hours at 70°F (21°C) & 50% RH. • Protect finished surface from traffic for at least 24 hours at 70°F (21°C). • Do not expose grout to acid cleaners for 14 days. • Allow grout to cure for 14 days at 70°F (21°C) prior to use in submerged applications or steam rooms. See LATICRETE Technical Data Sheet 192 for more information on grouting of ceramic tile in submerged installations.

SANDED CEMENT GROUT INSTALLATION

NOTES: Minor surface scratching may result from using sanded grouts. Always conduct a test area, prior to proceeding with the actual installation, to verify suitability and acceptability of a sanded grout.

PERMACOLOR® Grout:

Polymer Fortified Cement Grout (ANSI A118.7): Allow tile installation to cure a minimum of 24 hours @ 70° F (21°C). Verify grout joints are free of dirt, debris or tile spacers. Sponge or wipe dust/dirt off veneer face and remove any water standing in joints. Apply grout release as recommended. Surface temperature must be between 40-90° F (4-32°C). Pour approximately 64 oz. (1.9 L) of clean, potable water into a clean mixing container. Add a 25 lb. (11.3 kg) bag of LATICRETE® PERMACOLOR™ Grout to the container while mixing. Mix with a slow speed mixer to a smooth, stiff consistency. Install latex fortified cement grout in compliance with current revisions of ANSI A108.1A, ANSI A108.02 and ANSI A108.10. Dampen dry surfaces with clean water. Spread using a sharp edged, hard rubber float and work grout into joints, packing joints full and free of voids/pits. Hold float face at a 90° angle to grouted surface and use float edge to "squeegee" off excess grout, stroking diagonally to reduce pulling grout out of filled joints. Initial cleaning can begin as soon as grout has become firm, typically 15-20 minutes after grouting @ 70° F (21°C). Begin initial cleaning by lightly dampening the entire grouted area with a damp sponge. Then wash clean the entire area with a damp (not wet) sponge. Drag a clean towel, dampened with water, or wipe a clean, dampened sponge, diagonally over the veneer face to remove any grout haze left after "squeegeeing." Rinse towel/sponge frequently and change rinse water at least every 200 ft² (19m²). Repeat this cleaning sequence again if grout haze is still present. Allow grout joints to become firm. Buff surface of grout with clean coarse cloth. Inspect joint for pinholes/voids and repair them with freshly mixed grout. Within 24 hours, check for remaining haze and remove it with warm soapy water and a nylon scrubbing pad. Do not use acid cleaners on latex Portland cement grout less than 10 days old.

PERMACOLOR® Select Grout:

LATICRETE® PERMACOLOR® Select is an advanced, high performance cement grout that offers the industry's first dispensable dry pigment solution. LATICRETE PERMACOLOR Select is designed for virtually all types of residential and commercial installations and offers optimum performance on the most demanding exterior or interior applications. Easy to mix, grout and clean, LATICRETE PERMACOLOR Select is fast setting and is suitable for joints 1/16" to 1/2" (1.5mm – 12mm) wide on floors or walls.

Surface Preparation - Before starting to grout, remove spacers and debris in grout joints and remove dust and dirt using a wet sponge. Do not leave water standing in joints. Note: when grouting in hot weather refer to TDS 176 Hot Weather Tiling and Grouting. Substrate temperature must be between 40°F (4°C) and 90°F (32°C). Apply grout release or sealer if necessary. Refer to TDS 400 Grout Guide for more information on grouting.

Mixing - Use approximately 2 – 2.25 quarts (1.9 L – 2.1 L) of clean potable water for 2 LATICRETE PERMACOLOR Select Color Packs and 25 lbs (11.3 kg) of LATICRETE PERMACOLOR Select Grout Base. Do not use with 1776 Grout Enhancer or any other latex additive. Place water in a clean mixing container. Remove Color Packs from the cardboard container as well as the protective plastic sleeve. The internal bag is a water-dispersible pack – when using the 25 lbs. (11.3 kg) bag of LATICRETE PERMACOLOR Select, drop both color packs directly to water in clean mixing container. Mix with a drill mixer until pigment is dispersed evenly in container and the dispersible pack is no longer visible. Add LATICRETE PERMACOLOR Select Base. Mix with a slow speed drill mixer (300 rpm) for 1 minute. Wait for 5 minutes and remix with drill for 1 minute. If using the 12.5 lb. bag, drop only one color pack into 1 – 1.1 quarts (.8L – 1.0 L) of clean water.

Application - Clean tile surface with a damp sponge. Spread with a sharp, firm rubber grout float or wall float for narrow wall joints. To remove excess grout hold the float at a 90° angle and pull it at a 45° angle diagonally across the joints to avoid pulling out the material.
Note: If the grout begins to stiffen during installation, remix with drill mixer for 10–15 seconds. DO NOT ADD MORE WATER.

Cleaning - For first cleaning wait approximately 35 – 40 minutes at 70°F (21°C). Wider joints or cooler temperatures may extend wait time. Begin initial cleaning by lightly wiping down entire area to be cleaned with a damp sponge. Wash with a damp sponge (not wet). Work diagonally to the joints. Allow to dry 3 hours at 70°F (21°C). For second cleaning use a damp sponge or dry cloth to remove remaining grout haze. Note: If grout is to be sealed, LATICRETE generally recommends waiting a minimum of a 72 hours at 70°F (21°C) prior to sealing LATICRETE PERMACOLOR Select, with a LATICRETE STONETECH® Heavy Duty Grout Sealer

PROTECTION

- To avoid damage to finished tile work, schedule floor installations to begin only after all structural work, building enclosure, and overhead finishing work are completed.
- Keep all traffic off finished tile floors until they have fully cured. Builder shall provide up to ¾" (19mm) thick plywood or OSB protection over non-staining Kraft® paper to protect floors after installation material has cured. Covering the floor with polyethylene or plywood in direct contact with the floor may adversely affect the curing process of grout and latex/polymer fortified Portland cement mortar.
- Keep floors installed with epoxy adhesive closed to traffic for 24 hrs. at 70°F (21°C), and to heavy traffic for 48 hours @ 70°F (21°C) unless instructed differently by manufacturer.
- Use kneeling boards, or equivalent, to walk/work on newly tiled floors.
- Cure tile work in swimming pools, fountains and other continuous immersion applications for 10 days for epoxy based grout and 14 days for latex Portland cement based grout @ 70°F (21°C) before flood testing or filling installation with water. Extend period of protection of tile work at lower temperatures, below 60°F (15°C), and at high relative humidity (>70% R.H.) due to retarded set times of mortar/adhesives.
- Replace or restore work of other trades damaged or soiled by work under this section.
- Protect exterior veneer installations from exposure to rain for a minimum of 7 days at 70° F (21° C).

COLD WEATHER NOTE

The curing of latex and Portland cement based materials is retarded by low temperatures and finished work should be protected for an extended period of time. Typically, for every 18° F below 70° F (10°C below 21°C), latex and Portland cement based materials take twice as long to cure.

HOT WEATHER NOTE

The evaporation of moisture in Portland cement grouts is accelerated by hot, dry conditions. Apply grout to dampened surfaces & protect freshly spread grout & finished work when installing in temperatures over 95 degrees F (35 degrees C).

As a professional courtesy, LATICRETE does offer technical services free of charge. LATICRETE does not have any express or implied contractual obligation or duty to provide those technical services. The user maintains all responsibility for verifying the applicability and suitability of the technical service or information provided by LATICRETE representatives. Moreover, technical service site visits and consultations do not constitute express or implied approval by LATICRETE of product use or other construction means and methods. By providing technical services, LATICRETE does not undertake to perform any duty owed by the user to any third party, and no third party should rely on LATICRETE providing technical services.

LATICRETE Technical Services provides review of job specifications and plans, project detail planning and review, and provides answers to questions concerning the installation of ceramic tile, brick, marble and stone. Call toll free USA +1 (203) 393-0010. Fax: USA +1 (203) 393-1684. E-mail: technicalservices@laticrete.com, Internet: www.laticrete.com. To obtain a copy of detailed product information, most recent revisions of LATICRETE data sheets, and answers to installation questions, E-mail: technicalservices@laticrete.com or call (800) 243-4788 x.235.

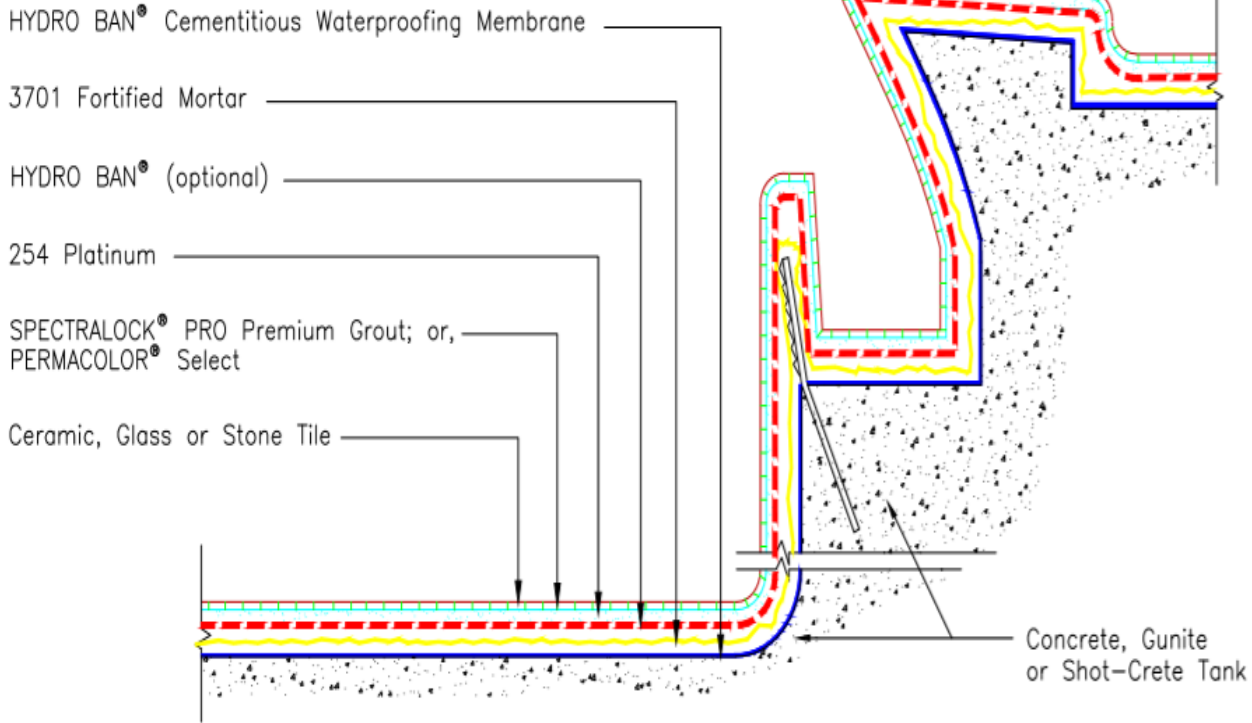
© 2020 LATICRETE INTERNATIONAL, Inc. The right to copy, distribute, and utilize for commercial purposes is specifically granted to Stone and Tile Importers and manufacturers, Architects, Engineers, and Specifications Writers.

All trademarks shown are the intellectual properties of their respective owners.

R June 18, 2020



Drawing No. ES-P602



NOTE: Slurry Bond Coat of 254 Platinum is required under the mortar bed at all horizontal surfaces.

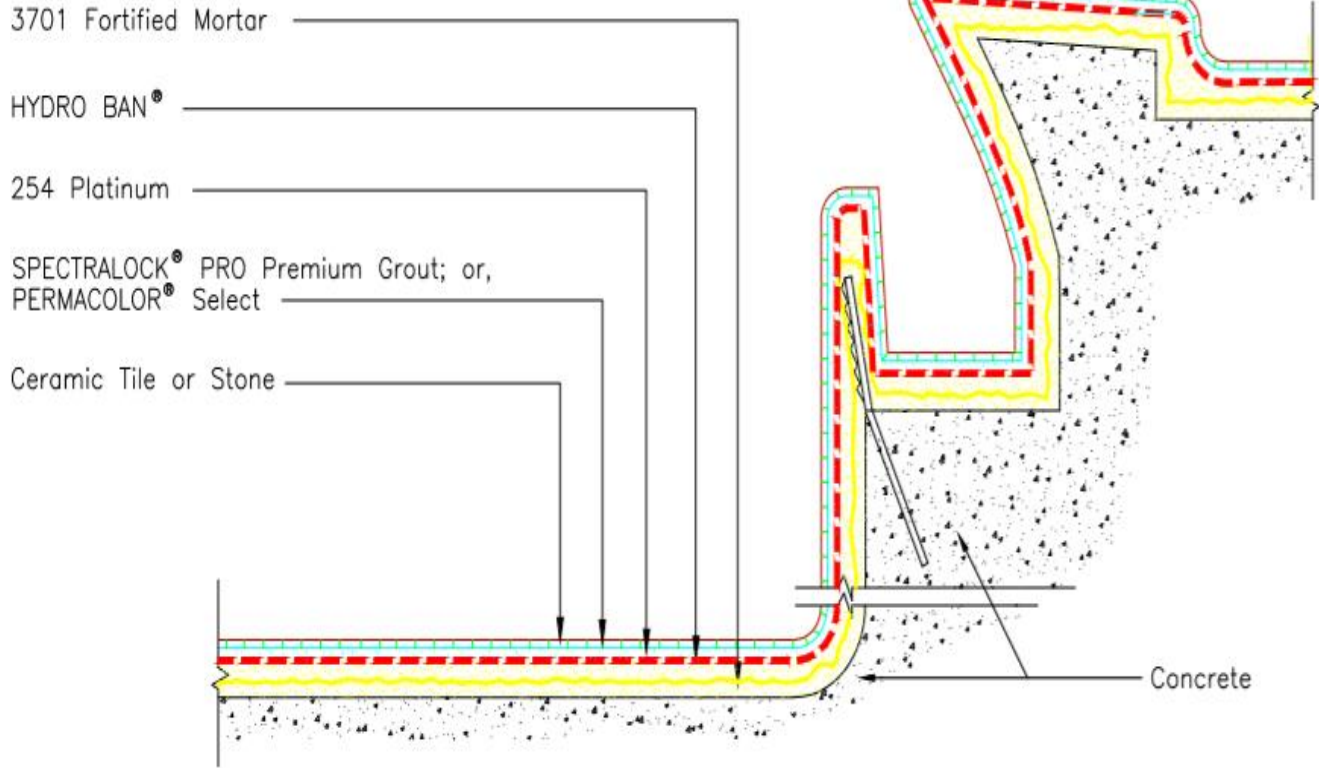
Revision Date: 9/19 Scale: N.T.S.

AS A PROFESSIONAL COURTESY, LATICRETE OFFERS TECHNICAL SERVICES FREE OF CHARGE. THE USER MAINTAINS ALL RESPONSIBILITY FOR VERIFYING THE APPLICABILITY AND SUITABILITY OF THE TECHNICAL SERVICE OR INFORMATION PROVIDED.

(C)2019 LATICRETE INTERNATIONAL, INC. ALL RIGHTS RESERVED. THE RIGHT TO UTILIZE LATICRETE DETAILS FOR COMMERCIAL PURPOSES IS GRANTED EXCLUSIVELY TO CONTRACTORS, ARCHITECTS, QUANTITY SURVEYORS, ENGINEERS, AND SPECIFICATIONS WRITERS. ALL TRADEMARKS SHOWN ARE THE INTELLECTUAL PROPERTIES OF THEIR RESPECTIVE OWNERS.



Drawing No. ES P601



Note:
Slurry Bond Coat of 254 Platinum is required under the mortar bed at all horizontal surfaces.

Revision Date: 1/15 Scale: N.T.S.

AS A PROFESSIONAL COURTESY, LATICRETE OFFERS TECHNICAL SERVICES FREE OF CHARGE. THE USER MAINTAINS ALL RESPONSIBILITY FOR VERIFYING THE APPLICABILITY AND SUITABILITY OF THE TECHNICAL SERVICE OR INFORMATION PROVIDED.

(C)2015 LATICRETE INTERNATIONAL, INC. ALL RIGHTS RESERVED. THE RIGHT TO UTILIZE LATICRETE DETAILS FOR COMMERCIAL PURPOSES IS GRANTED EXCLUSIVELY TO CONTRACTORS, ARCHITECTS, QUANTITY SURVEYORS, ENGINEERS, AND SPECIFICATIONS WRITERS. ALL TRADEMARKS SHOWN ARE THE INTELLECTUAL PROPERTIES OF THEIR RESPECTIVE OWNERS.